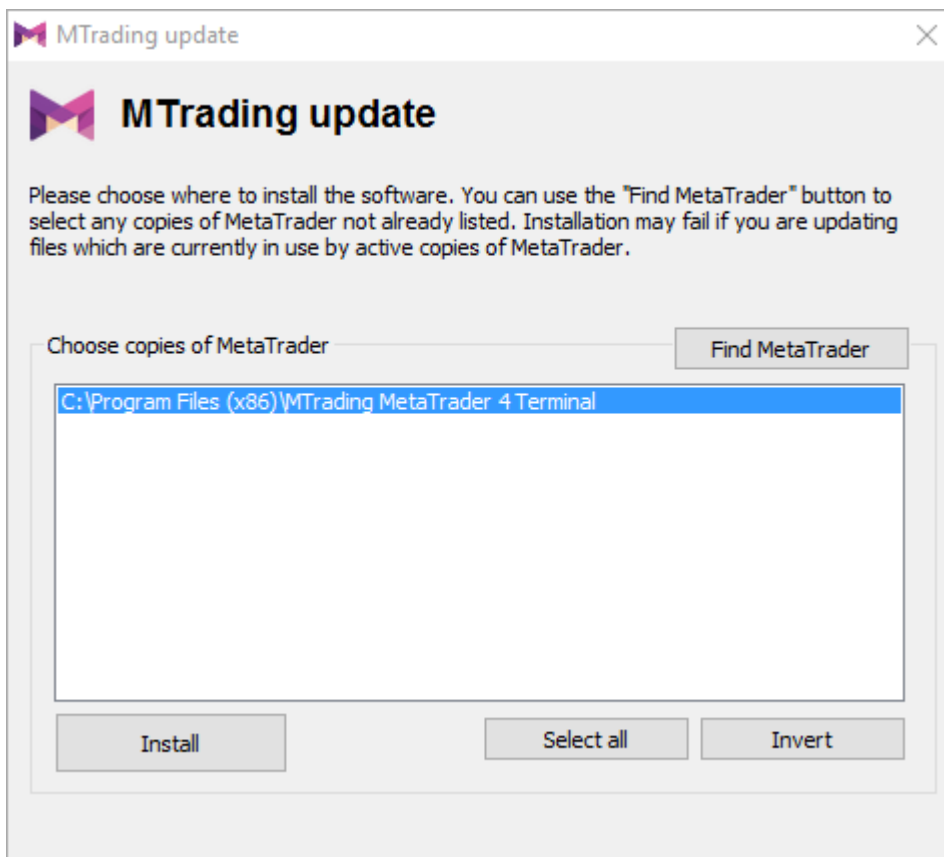


MT4 Supreme Edition Indicator Solutions

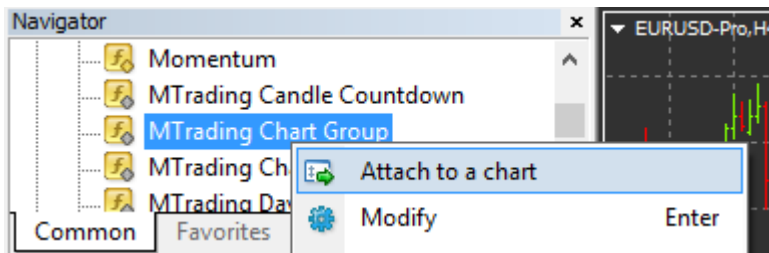
1. Installing and opening indicators

Download MetaTrader 4 Supreme Edition. If you have MetaTrader 4 (MT4) opened, close it and begin installation.

Open the file in the archive and follow the instructions. Once the installation has completed, you can run MetaTrader 4.



Currently, MT4 Supreme Edition extensions are only available for Windows. Some indicators may work with Mac OS as well (see Chapter 1.1. on installation under Mac OS X).



Double-click on the indicator in the MT4 Navigator list and drag the EA onto the chart. Alternatively, you can right-click its name and select *Attach to a chart*.

1.1. Installation under Mac OS X

The indicators that are compatible with Mac OS X include Candle Countdown, High-Low, Local Time, Order History, Pivot and Spread.

Please contact our customer service for the Mac installation assistant.

Close the MetaTrader 4 software before the installation:

1. right-click the MetaTrader 4 symbol in the dock
2. click the option for closing it.

To install the extension:

1. open your *Programs* folder
2. find MetaTrader 4
3. right-click it
4. choose the Show content option
5. open the following folder path: *drive_c* → *Program Files* → *MTrading MetaTrader 4* → *MQL 4* → *Indicators*
6. paste the indicators (.ex4 file extension)
7. run the MetaTrader 4.

Successfully installed indicators are located in the navigator window.

2. MTrading Candle Countdown indicator

Once you enable Candle Countdown Indicator, it displays the time until the next candle in the bottom-right corner of the chart.

When you apply the indicator, you can change the location of timer. You can set the timer location

next to the candle. To do this, enable choose *In line with price*. Note that automatic chart scrolling needs to be activated for this to work.

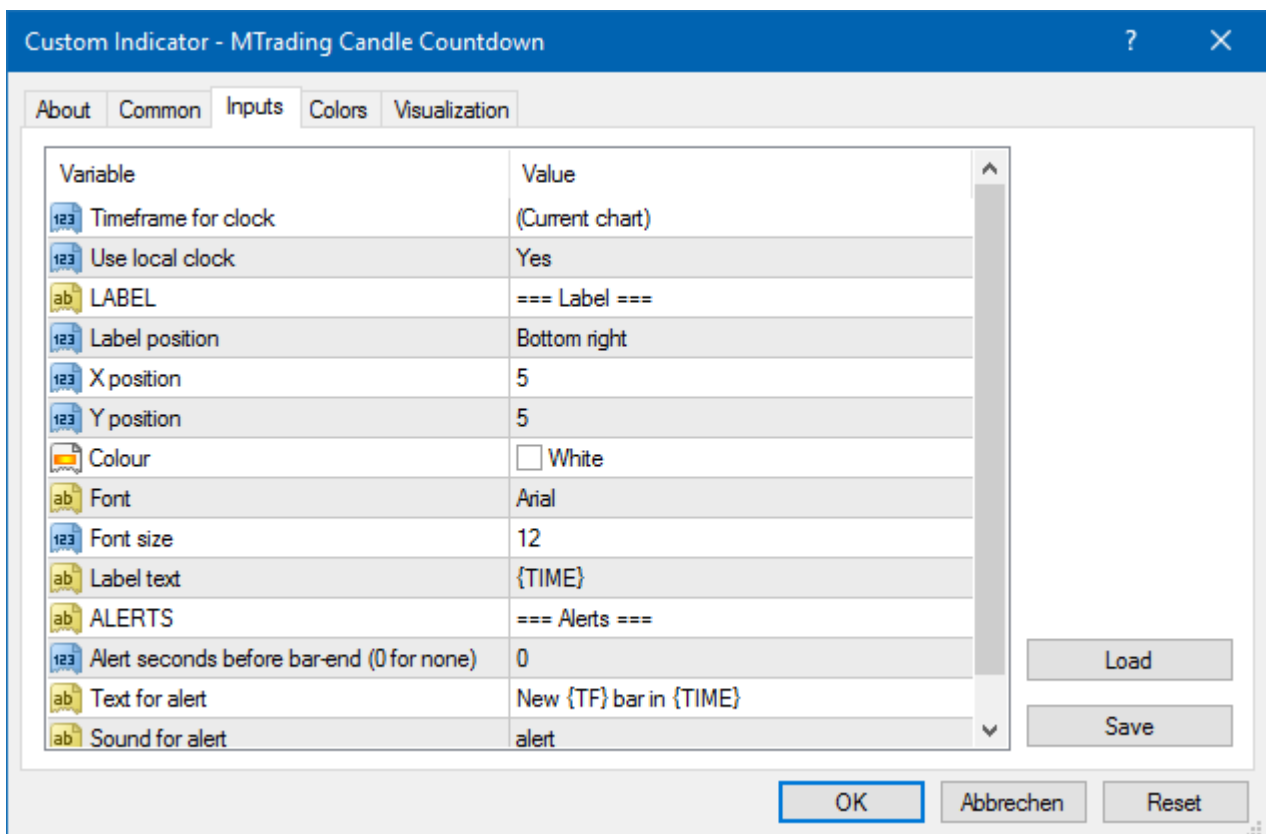


2.1.Candle Countdown indicator settings

The settings of the Candle Countdown indicator are label position, colour plus font and font size.

1. *Label position* sets the position of the Candle Countdown timer.
2. *Colour* sets the colour of the displayed number.
3. *Font* and *Font Size* configure the font.

You can also set alerts for new candles using the line *Alert*.

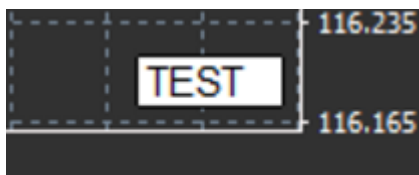


3.MTrading Chart Group indicator

The Chart Group indicator connects several charts. This way, you can edit all charts at once by changing one of them. The change is applied automatically to all charts in the group.

Apply the indicator to all chart windows you want to connect. A text box will appear in the bottom-right corner of every chart.

You can set a name and the chart group will connect all charts with the same name. This feature is not case-sensitive.



4.MTrading Freehand Drawing indicator

The MTrading Freehand Drawing indicator is a tool that lets you draw the chart yourself.

To draw the chart, apply the indicator and hold D while drawing with your mouse.



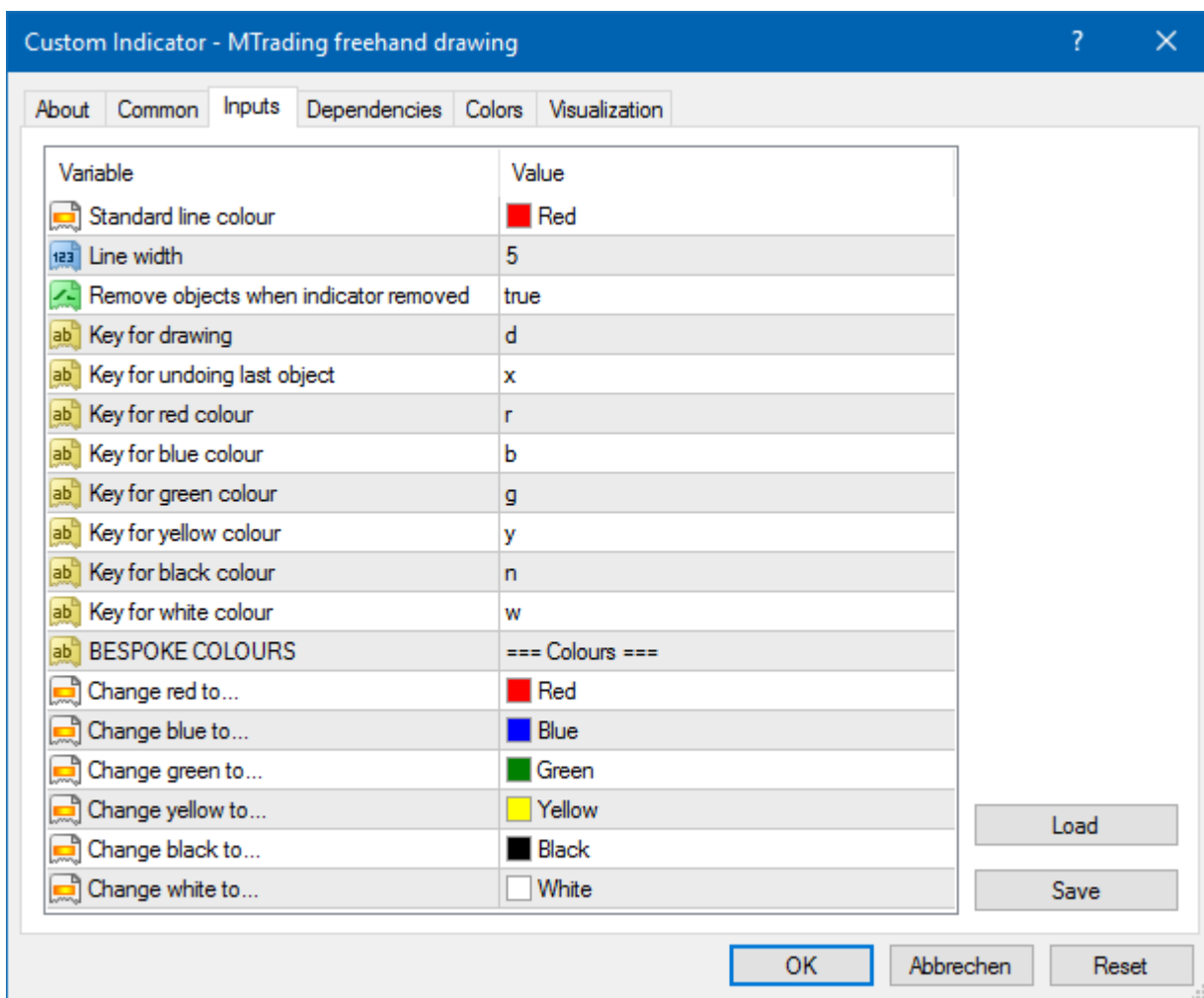
4.1.Settings and keybindings

The standard line colour is red. You can customise the colour by pressing different hotkeys:

1. B is blue
2. Y is yellow
3. N is black
4. W is white

To undo the last drawing, press X.

You can also configure the keys and colours in the settings menu.



5.MTrading High-Low indicator

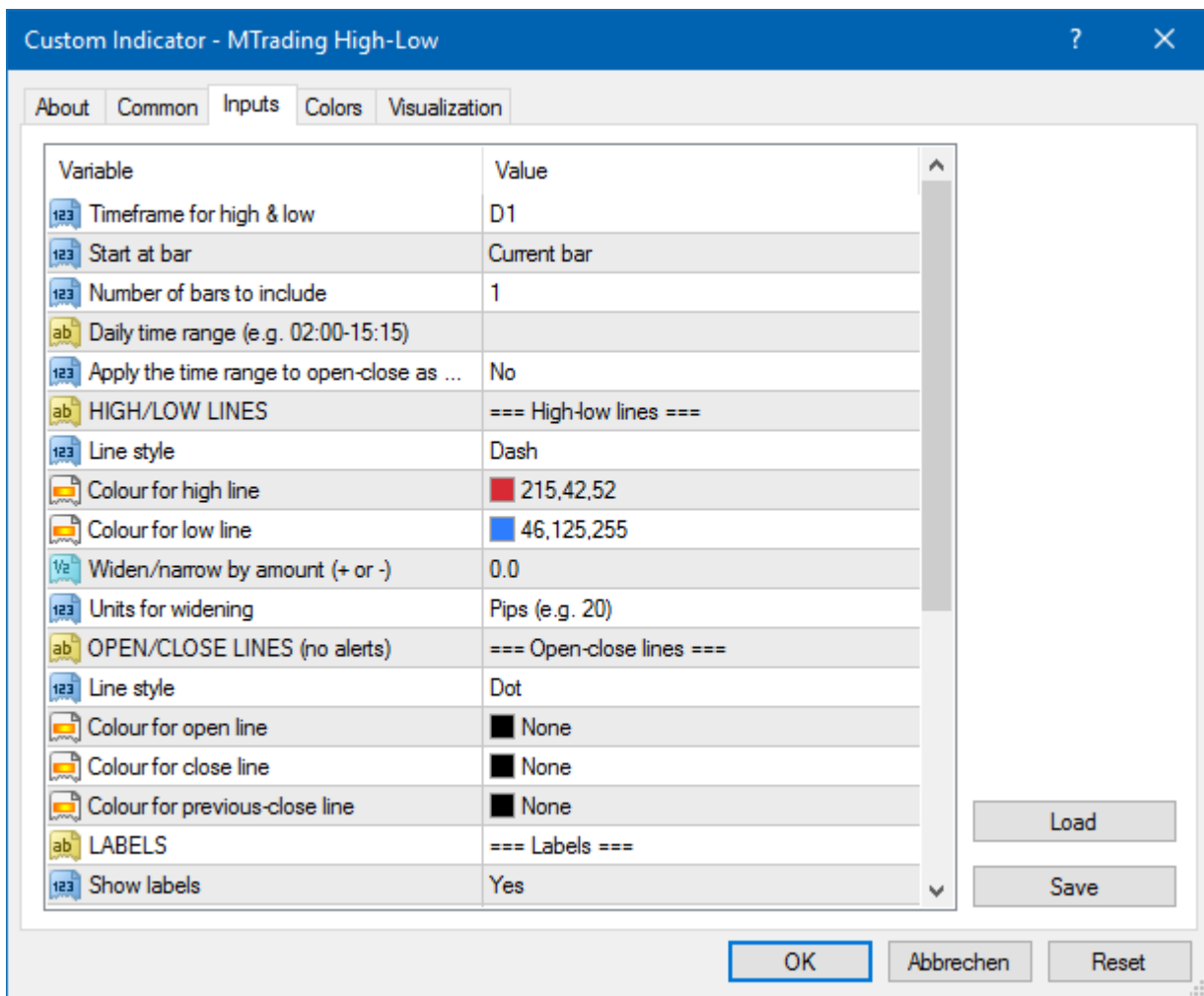
The High-Low indicator displays the highest and lowest price values within the selected time-frame. This supports time standard time measurements like minutes, hours and days. The latter are the default time settings.



To change the line colours, in the settings screen.

5.1.High-Low indicator settings

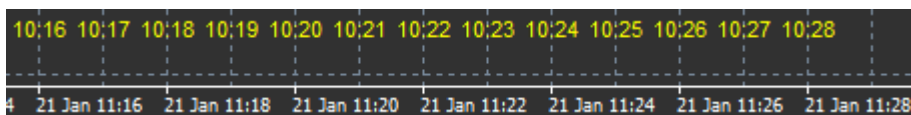
1. *Timeframe for high & low* changes the time unit of the indicator.
2. *Start at bar* sets the current or former candle as the basis for calculating high and low.
3. *Numbers of bars to include* sets the amount of candles for calculating high and low.
4. *Daily time range* set the time period when high and low are calculated.
5. *Apply the time ranges to open-close as well as high-low* applies the time-frame to open and close lines.
6. *Colour for high and low line* customises the colour for high and low lines.
7. *Widen/narrow by amount* changes the width of the high and low.
8. *Units for widening* sets the unit of measurement for the setting option.
9. *Line style* adjusts the style of the open-close lines.
10. *Colour for open line* enables the current open line and sets its colour (option is disabled if colour is set to None).
11. *Colour for close line* enables the current close line and sets its colour (option is disabled if colour is set to None).
12. *Colour for previous-close line* enables the previous close line and sets the colour (option is disabled if colour is set to None).
13. *Label-settings* configures the labels.
14. *Alert-settings* sets an alert in case the price crosses a certain line.



6.MTrading Local Time indicator

The Local Time indicator shows your local time and server time at the bottom.

You can set the colour.



7.MTrading Order History indicator

The Order History indicator represents your past trades in the chart.

Successful trades are green. Losing trades are red.

To see details about the trade, hover the mouse over a specific line. The information includes opening and closing price, S/L and T/P.



This example shows

€33.90 of profit

The blue and gray bars in the chart offer information about past trades. The blue bar represents trades in the same symbol and the gray bar to trades in all other symbols.

7.1. Order History indicator settings

1. *Include open trades?* chooses whether currently open trades should be displayed.
2. *Colour coding of trades* sets the colour coding for win/loss or buy/sell.
3. *Colour 1* sets the colour for the win or buy line.
4. *Colour 2* sets the colour for the loss or sell line.
5. *Colour for open trades* sets the colour of the marker that represents points where orders are opened.
6. *Entry and exit markers* sets the type of marker.
7. *Line from open to close* sets the style of the history bars.
8. *Stop-loss line colour style* sets the colour and style of the stop loss lines (requires a style to activate).
9. *Take-profit line colour style* sets the colour and style of the take profit lines (requires a style to activate).
10. *Show bands for active trading periods* enables and disables the display of trades in other symbols at the bottom of the chart.
11. *In-filter-colour* and *Out-of-filter-colour* sets the colour of the bars for trades in the active symbol or other symbols.
12. *Size of band (pixels)* sets the size of the bars.
13. *Filter settings* sets an individual filter for the displayed trades.

8.MTrading Pivot indicator

The pivot points show different resistance and support lines in the chart.

The PP-line is the most important support and resistance line.

R1, R2 and R3 represent increments of the resistance with decreasing significance.

On the other hand, S1, S2 and S3 represent increments of the support.



8.1.Pivot indicator settings

1. *Timeframe for pivot points* sets the time-frame necessary to calculate pivot points.
2. *Number of bars to include* sets the number of candles necessary to calculate the pivot points.
3. *Calculation for PP level* sets the price calculation method for pivot points.
4. *Show lines all the way across chart* displays lines across the entire chart.
5. *Show labels for all lines* enables labels for pivot lines.
6. *Bar offset for labels (+ for future)* adjusts line labels to the right or left.
7. *Font name for labels* adjusts the font type for the line labels.
8. *Font size for labels* adjusts the font size for the line labels.
9. *Colours and styles* adjusts the colour and style of individual lines.
10. *Alerts* manages notifications for price-crossing lines.

9.MTrading Renko indicator

The Renko indicator is used for technical chart analysis. It displays new candles only when actual price movements take place. This ignores minor price movements that don't affect the trend, which helps to keep the overall picture clear.



9.1.Renko indicator settings

1. *Renko block size in pips* sets the size of Renko blocks.
2. *Symbol pip size* sets the pip size of the instrument.
3. *Colour for up and down blocks* sets the colour of the Renko blocks.
4. *Draw blocks as continuous* sets whether blocks are continuous or not.
5. *Target lines for next blocks* sets the style of indicator lines.
6. *Draw on top of chart* sets whether Renko blocks appear in the foreground or background.
7. *Alerts on new blocks* sets alerts in case of new blocks.
8. *Round the starting price* enables the rounding of the starting price.
9. *Maximum historic blocks* sets the number of blocks displayed.
10. *Build Renko data from history period* sets the time-frame for calculating the Renko indicator.
11. *CSV/TSV log stores* a log file by choosing a file name and a format.
12. *Offline chart* configures the settings (see Chapter 9.2.).

9.2.Open offline chart

Create offline chart period - sets up your desired amount of blocks that doesn't match one of the

standard time-frames in MT4, such as 10 for 10 pips Renko blocks.

To open offline chart:

1. click on *File* and then *Open offline*
2. *double-click* the chart with the time-frame you chose.

The offline chart should open. In this example, offline chart would be M10.



The open offline chart contains candles with unified size according to the amount of pips you chose. Movement disturbances are filtered out and ignored. Trend movements, resistances and supports are made more clear.

10.MTrading Spread indicator

The Spread Indicator calculates and displays the spread of an instrument. It displays the spread until it is deactivated. The details include maximum, minimum and the average spread for time period.



11.MTrading Day Session indicator

The Day Session indicator hides candles generated during night sessions. This allows you to continue working with your old settings and indicators as usual.

Additionally, you can create your own time windows for sessions, such as DAX30 Xetra from 09:00 to 17:30 CET.

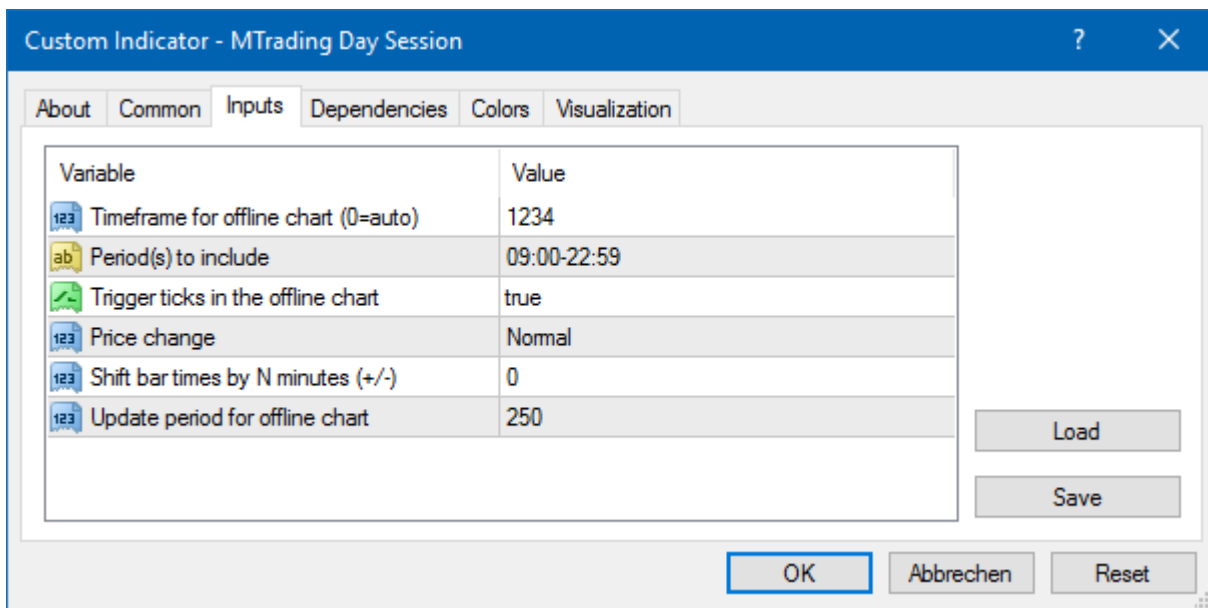
By default, the indicator is set to show the DAX30 session from 08:00 to 22:00 CET.

Apply the indicator to the chart, click on *File*, choose *Open offline* and select a symbol to open in an offline chart.

You can always change the time periods displayed in the active chart. This changes the periodicity in the offline chart.

Additionally, you can apply templates, indicators and expert advisors to the offline chart.

11.1.Day Session indicator settings



1. *Timeframe for offline chart* shows the offline chart ID.
2. *Period(s) to include* shows the time duration of the session.
3. *Shift bar times by N minutes* adjusts the time by the selected amount of minutes.

12.MTrading Chart-in-Chart indicator

This indicator allows you to display a second chart directly inside a main chart window.

This is especially useful when you want to observe possible correlations, since the Chart-in-Chart indicator allows you to view two instruments simultaneously. The additional chart is displayed inside the main chart.

It is possible to add indicators to the second chart. You can enable and configure these with the indicator settings for the Chart-in-Chart indicator.

You can only trade the instrument in the main chart. The Chart-in-Chart indicator does not represent a fully functional chart.



12.1. Chart-in-Chart indicator settings

1. *Symbol* sets the preferred trading instrument to be displayed in the second chart (refer to the market overview window for correct names)
2. *Invert prices* inverts the instrument prices (for example, EUR/USD will be converted to USD/EUR)
3. *Draw style* selects the chart style.
4. *Line/high-low colour* sets up the colour for chart lines.
5. *Candle body - bull* sets the colour for bullish, upwards candles.
6. *Candle body - bear* sets the colour for bearish, downwards candles.
7. *Colour for current price line* sets the colour for the line that displays the current price.
8. *Colour for open position lines* sets the colour for opened positions. This option is deactivated by default.
9. *Colour for s/l and t/p lines* sets the colour for Stop Loss or Take Profit orders (deactivated by default).
10. *Colour for pending order lines* sets the colour for pending orders (deactivated by default).
11. *Line style for open positions and pending orders* sets the style of the line that marks opened and pending orders by choosing from solid lines, dotted lines, dashed lines or a combination of both.
12. *Indicator* selects and configures indicators to be applied to the second chart. Indicators with further parameter settings can be customised under the respective option here.

13.MTrading Magnifier indicator

The Magnifier zooms in on a chart to include the shorter time units.

To change the size of magnified area, adjust the size of the indicator. Click on the edge of the indicator and drag it change the size.

Additionally, you can change the degree of magnification. For example, you can set it to always show M1.

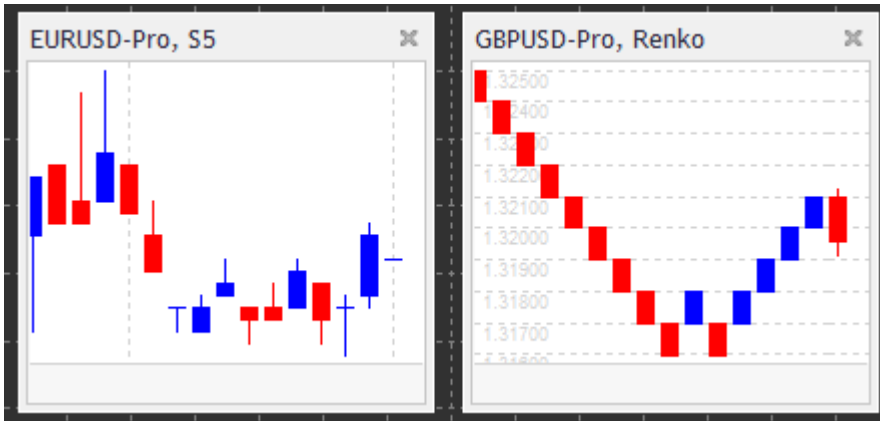
13.1.Magnifier indicator settings

1. *Chart timeframe/type* selects the degree of magnification. Default setting is one period smaller.
2. *Draw style* selects the chart style (candles, end price or high and low).
3. *Background colour* sets the background colour of the indicator.
4. *Up bar colour* sets the colour of upwards candles and bars.
5. *Down bar colour* sets the colour of downwards candles and bars.
6. *Magnifier highlight colour* sets the colour of the magnified area.
7. *Horizontal grid lines* adjusts the distance between horizontal lines. Note that this setting is individually different for every instrument. For example, in EUR/USD it is 0.0020 while in DAX30 it is 20.
8. *Vertical grid lines* sets the distance between vertical lines.
9. *Colour for grid lines* sets the colour of the grid.
10. *Candle size* changes the size of the candles.
11. *Initial left position* moves the standard position of the chart by a certain number of pixels to the right.
12. *Initial top position* moves the standard position of the chart by a certain number of pixels down.
13. *Corner for initial position* selects the corner of the chart where the magnified area should be displayed.
14. *Initial width* adjusts the standard width in pixels.
15. *Initial height* adjusts the standard height in pixels.
16. *Padding at top and bottom* adjusts the minimal distance from candles to the edge of the chart.
17. *Info bar height* adjusts the size of the info bar.

14.MTrading Mini Chart indicator

The Mini Chart indicator displays a customisable chart inside the main chart. Instrument and time-frame are entirely independent from the main chart and the Mini Chart can be used with multiple

indicators.



14.1. Mini Chart indicator settings

1. *Chart symbol* selects the trading instrument. Make sure spelling is correct and identical to the name displayed in the market overview.
2. *Invert prices* inverts the prices. For example, EUR/USD to USD/EUR.
3. *Chart timeframe/type* - set the time frame for the Mini Chart. Default setting is the current period of the main chart. You can choose any other period, even those not normally available in MetaTrader, such as 3M, 4M or 12M. See Chapter 14.2 for further details
4. *Ticks per bar* sets the number of ticks used per candle (only for the Tick Chart).
5. *Transformation* selects a chart-changing indicators, such as Heikin Ashi or Three Line Break.
6. *Renko/range/Kagi/P&F Block size* configures the size of blocks in defined units (see below).
7. *Units for block size* sets the unit of block size.
8. *Reversal factor for range and P&F* set a reversal factor, the number of blocks before movement is drawn in the opposite direction.
9. *Base timeframe for historic Renko, range Kagi, P&F data* selects time-frame used for calculating candles.
10. *Draw style* selects a chart style such as candles.
11. *Background colour* configures the background colour of the indicator.
12. *Up bar colour* configures the colour for upwards candles and bars.
13. *Down bar colour* configures the colour for downwards candles and bars.
14. *Fixed maximum price* adjusts a maximum price for the chart.
15. *Fixed minimum price* adjusts a minimum price for the chart.
16. *Include Indicators in min/max* selects whether to use indicator values for min-/max-prices of the chart.
17. *Colour for grid lines* configures the colour for the grid.
18. *Horizontal grid lines* configures the distance between horizontal lines. This setting is different for every instrument.
19. *Vertical grid lines* configures the distance between vertical lines.
20. *Zoom level* adjusts the zoom level of the chart. Zoom level 0 refers to the minimal amount of magnification, while zoom level 5 is the maximal amount.

21. *Initial left position* moves the standard position of the chart by the given amount of pixels to the right.
22. *Initial top position* moves the standard position of the chart by the given amount of pixels down.
23. *Corner for initial position* selects the corner of the chart where the Mini Chart should be displayed.
24. *Initial width* configures the standard width in pixels.
25. *Initial height* configures the standard height in pixels.
26. *Padding at top and bottom* adjusts the minimal distance between the candles and the edge of the chart.
27. *Padding at right* sets the chart shift function. The higher the amount of pixels, the more distance between the chart and the right border of the chart.
28. *Info bar height* configures the size of the info bar.
29. *Indicator* selects and configures indicators that should be applied to the second chart. Indicators with further parameter settings can be customised under the respective option here.

14.2. Chart type explanation

Second charts (S5, S15, etc.) draw candles with a set time interval. The S5 chart draws a new candle every five seconds. There is no historical data for second charts, which means this chart type of chart is created as soon as you apply the indicator.

Range charts draws new candles only when the price moves by a set amount of pips. Same-direction candles are combined into one candle.

Renko charts is similar to range charts. There needs to be an opposing movement of at least two blocks to draw a block in the opposite direction of the trend.

Kagi charts changes direction when the price reaches a reversal that surpasses the former high/low point.

Point & Figure charts are similar to range charts, but the same-direction movement is being stacked. A reversal occurs only when an opposing movement lasts for a set number of blocks. The standard setting for this is three blocks. You can change this setting in the Reversal factor for range and P&F setting.

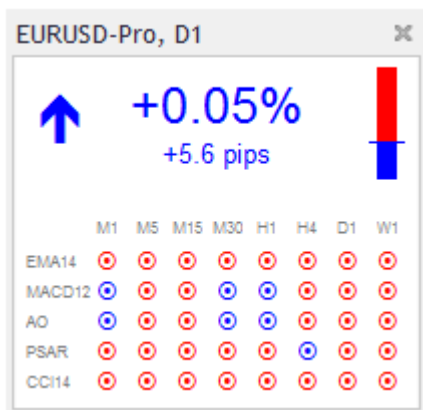
15. MTrading Symbol Info indicator

The Symbol Info indicator allows you to view a specific set of real-time updated information in a separate window. It displays the percentage difference between the opening course of the chosen

time frame, the daily high and a multitude of trend indicators while being fully customisable.

An arrow allows you to see whether the price moved up or down from the opening price as well as see the difference in pips.

A bar on the right displays the current price position in relation to the entire daily range.



15.1.Symbol Info indicator settings

1. *Symbol selects* the trading instrument. Default setting is the symbol in your current chart, but you can choose any different symbol at will. Make sure spelling is correct and identical to the name displayed in the market overview.
2. *Use pip size* sets the size of one pip.
3. *Timeframe for % change* configures the time frame the percentage change should use as a reference. The default setting is D1 (the current day).
4. *Number of bars for % change* configures the amount of candles the percentage change should use as a reference. For example, you can use 12 candles in a monthly chart to see the percentage change for a full year.
5. *Timeframe for high/low* -configures the time frame to be used in the high/low chart. Default setting uses the same time frame as the percentage change.
6. *Number of bars for high/low* configures the amount of candles to be used in high/low charts. For example, you can use 12 candles in the monthly chart to see price movement for a full year.
7. *Background colour* adjusts the background colour for the indicator.
8. *Rise colour* adjusts the colour for upwards movement.
9. *Fall colour* adjusts the colour for downwards movement.
10. *Text colour* adjusts the colour for text.
11. *Initial left position* moves the standard position of the indicators to the right by a number of pixels.
12. *Initial top position* moves the standard position of the indicator down by a number of pixels.
13. *Corner for initial position* selects the corner of the chart where the indicator should appear by default.

14. *Indicator* selects and configures indicators applied to the second chart. Indicators with further parameter settings can be customised.

16.MTrading Gravity indicator

The Gravity indicator displays resistance and support zones based on up to 10,000 historical M5 candles. The highs and lows reached in this history create the zones, while current data is considered more significant than older values.

Darker colours represent stronger support or resistance zones, zones the price is likely to bounce off of. A breach of a dark blue zone can be evaluated as a continuation signal. Brighter zones have no relevance.

16.1.Gravity indicator settings

1. *Time period* selects between regular or shortened calculation duration.
2. *Level X colour* configures the colours for the different levels of zones.

16.2.Change calculation area

To shift the area of reference for calculating the zones, draw a vertical line inside the chart and name it *GStart*.

You can move this line and set the last reference point in time for calculating the zones.

17.MTrading Keltner indicator

The Keltner indicator forms a Keltner channel in the chart. The way it functions, buy and sell signals are similar to the bollinger bands but are calculated based on the ATR indicator.

Moreover, this channel is less prone to calculation mistakes.



Crossing the upper band or the moving average is a signal of respective continuation. Usually, the middle line and the moving average are used for a stop loss line.

17.1.Keltner indicator settings

1. *Moving average type* selects the type of the moving average.
2. *Price for moving average* sets the price used for calculating the moving average.
3. *Moving average period* sets the time period for the moving average.
4. *ATR period* sets the time period of the ATR.
5. *ATR multiple* sets the multiplier for calculating the Keltner bands.
6. *Alerts when price crosses upper/lower channel* set an alert to trigger when the upper or lower band of the channel is crossed.

18.Frequently asked questions

1. **Do indicators support Mac OS?** Only a few indicators support Mac OS (see chapter 1.1).
2. **Do indicators support MT5?** No.
3. **Can extensions be removed from the MetaTrader 4 software individually?** Yes, you can remove extensions individually by right-clicking them in the navigator window.
4. **Do indicators support other languages?** No, the labels and settings of our indicators only support English.

19.More info

Please visit the official [MTrading channel on YouTube](#) for analytics, tutorials and live trading

sessions. We recommend you watch a comprehensive [introduction to MetaTrader 4 Supreme Edition](#).

Disclaimer:

ServiceComSvg Ltd provides these MetaTrader 4 plug-ins for free. To use this technology, you need a stable internet and server connection. ServiceComSvg Ltd has ensured technical reliability of abovementioned plug-ins, but technical problems may arise. ServiceComSvg Ltd provides free demo accounts for you to familiarise yourself with the technology and plug-ins before risking your funds. ServiceComSvg Ltd is not liable for losses sustained due to technical problems.

Risk disclosure:

Trading Forex and CFDs involves a high level of risk and may not be suitable for all investors. Carefully consider your level of experience and risk appetite before you start trading. Past performance of these types of investments does not guarantee any future results.